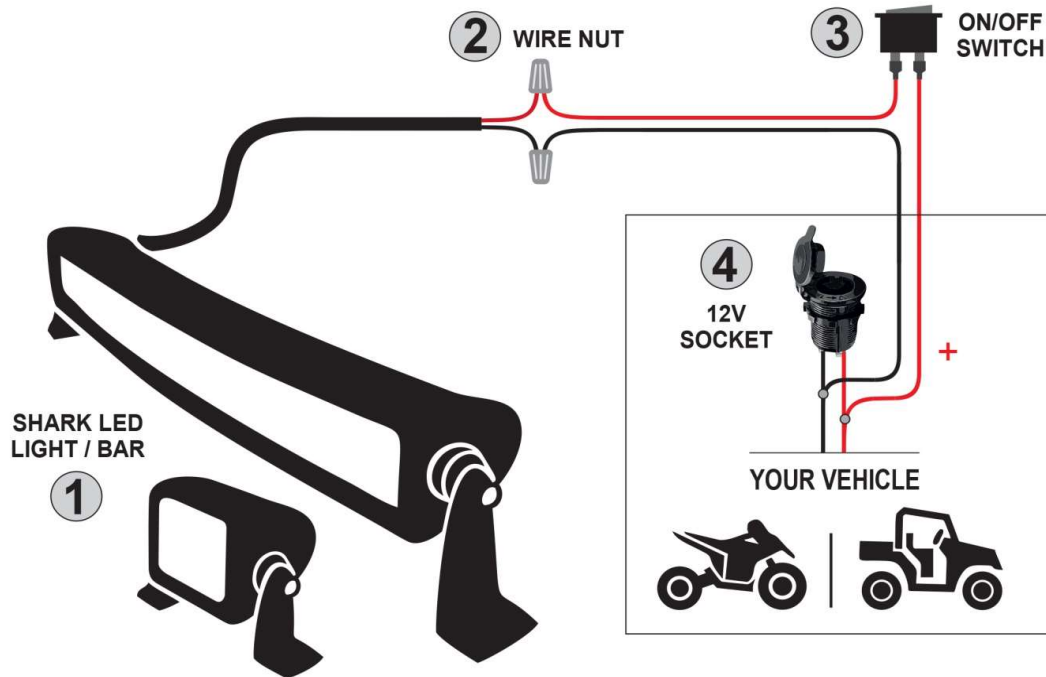


C. WIRING WITH 12V ACCESSORY SOCKET



Remarks:

- All wiring must be carried out in such a way as to be well insulated against moisture and humidity.
- After mounting and wiring, aim the lights in the proper direction and tighten all mounting hardware.



This product is designed and manufactured with high quality materials and components, which can be recycled and reused. Please do not dispose of this product with your normal household waste. This product should be returned via a separate collection system.



Protect the environment!

Official distributor:

ASP Group s.r.o.
Staroplzenecka 290
326 00 Letkov

Tel: +420 378 21 21 21

info@aspgroup.cz
www.aspgroup.cz

ASP Group s.r.o. reserves the right to change specifications and product design without prior notice. In case of questions, please contact your local dealer or directly ASP Group s.r.o.

© Copyright ASP Group s.r.o. 2020

All rights reserved. No part of this manual may be reproduced, reprinted, stored in data processing systems, or transmitted in any form or by electronic, mechanical, photographic or other means, transcribed, translated, modified, abbreviated or distributed in whole or in part without specific prior written consent of ASP Group s.r.o.